

# Eratech Pte Ltd

Blk 5000 Ang Mo Kio Ave 5 Techplace II  
#01-06/09 Singapore 569870  
Tel: +65/6482-4666 Fax: +65/6482-3862  
Email : sales@eratechprecision.com.sg  
Co. Reg. No.: 200616928Z

## COMPANY OVERVIEW

Jan 2015

### Growing With Our Customers



# AGENDA



[Company Background](#)

[Our Vision and Mission](#)

[Milestones](#)

[Our Strength](#)

[Market Segment](#)

[Eratech Machinery & Equipment](#)

[Organization Chart](#)

[Eratech Flow Chart](#)

[Our Products](#)

[Our Commitments](#)

[Contact Us](#)

# Company Background



Eratech Industrial Engineering ( EIE ), a leader in precision machining & turnkey manufacturing services was founded in 1983 by *Mr. Eddie Koh*. Under his leadership, EIE developed a broad base of engineering expertise and manufacturing know-how which enables EIE to successfully undertake and complete projects that are complex and technically demanding.

As of April 2007, we changed our name to Eratech Pte Ltd ( EPL ) to reflect the branding, development & diversification of our business. This coincides with the establishment of our strategic partner XPM Automation GMBH in Austria to service specifically the customised automated machines industry.

EPL has established its name in the following industries segment:

- 👍 *Semiconductor, Front-End & Back-End Equipment Segments*
- 👍 *Aerospace & Aviation Segments*
- 👍 *Manufacturing Machine Design & Automation Segments*
- 👍 *Optical and Imaging Segments*
- 👍 *Medical & Life-Line Support Equipment Segments*
- 👍 *Water Treatment & Purification Segment*

EPL's emphasis on its core values, continuous improvement program, and strict compliance with EPL's stringent QC practices and adherence to the AS/EN/JISQ 9100 : 2009 (Rev C) & ISO 14001: 2004. An international Quality Standard is a testament to its commitment to deliver high products and services.

# Our Vision & Mission



## Our Vision

To become the leading world class machining services & customized automation services supplier for the Asia Pacific Region

## Our Mission

To continuously innovate, create, develop & use state of the art machining facilities, services & technology. So as to provide the best value & quality products & services to our customer.

To create strategic partnership with our customer and suppliers to achieve our vision

# Our Milestones



- 1983 Establishment of Eratech Industrial Engineering
- 1988 1<sup>st</sup> phase upgrading of major manufacturing machineries and equipment
- 1995 Formation of Quality Control Department and investment in leading edge QC inspection equipment
- 1997 Achieved annual sales revenue of S\$530,000
- 1998 2<sup>nd</sup> phase upgrading of major manufacturing machineries and equipment
- 2000 Attainment of ISO 9001: 2000 Certification
- 2003 3<sup>rd</sup> phase upgrading of major manufacturing machineries and equipment
- 2005 Qualification as a vendor for ASM FEMS , Relocation to AMK – 10,000 sq-ft
- 2006 4<sup>th</sup> Phase upgrading of major manufacturing machine and equipment, Achieved annual sale revenues of over SG \$ 5,000,000. Change our company name to Eratech Pte Ltd and establish of our strategic partner XPM Automation GMBH to service the customized automated machines industry
- 2007 Under process of 5<sup>th</sup> Phase Upgrading major manufacturing machine and equipment up to S\$2,000,000.
- 2008 Invested S\$1.2 Million in 6 units of FANUC Robot Drilling Machines and 3 units of MAZAK CNC Lathe Machines.
- 2009 Acquired one new MAZAK CNC Quick Turn Star 200.  
Qualified (PPAP) by UNICORE to be their first precision machining vendor in ASIA
- 2010 Attainment of SE/EN/JISQ9100 and ISO 14001:2004 Certification. Acquired one unit of FUNAC ROBOT DRILLING Machine, one unit of MORISEIKI NVD 1500 DCG and one unit of MITSUBISHI MICRO V1. Also achieved annual sale revenues over S\$ 5,700,00.
- 2011 Acquired one unit of CNC Milling machine, EXTRON M6L ( X-1600,Y-1000,Z-800 ) and one unit of CNC Turning machine WASINO A-18-S
- 2012 Acquired one new CNC Milling machine MITSUBISHI MICRO V1-5X , one unit of CNC Turning machine TAKISAWA TCN-2000Y-T12,L3 , and YASDA Micro Center YMC 430 Version II.
- 2013 Participated at MTA - METAL ASIA 2013 as Exhibitor and acquired new CNC Milling machine YASDA YMB950V Ver III there.

# Our Strengths

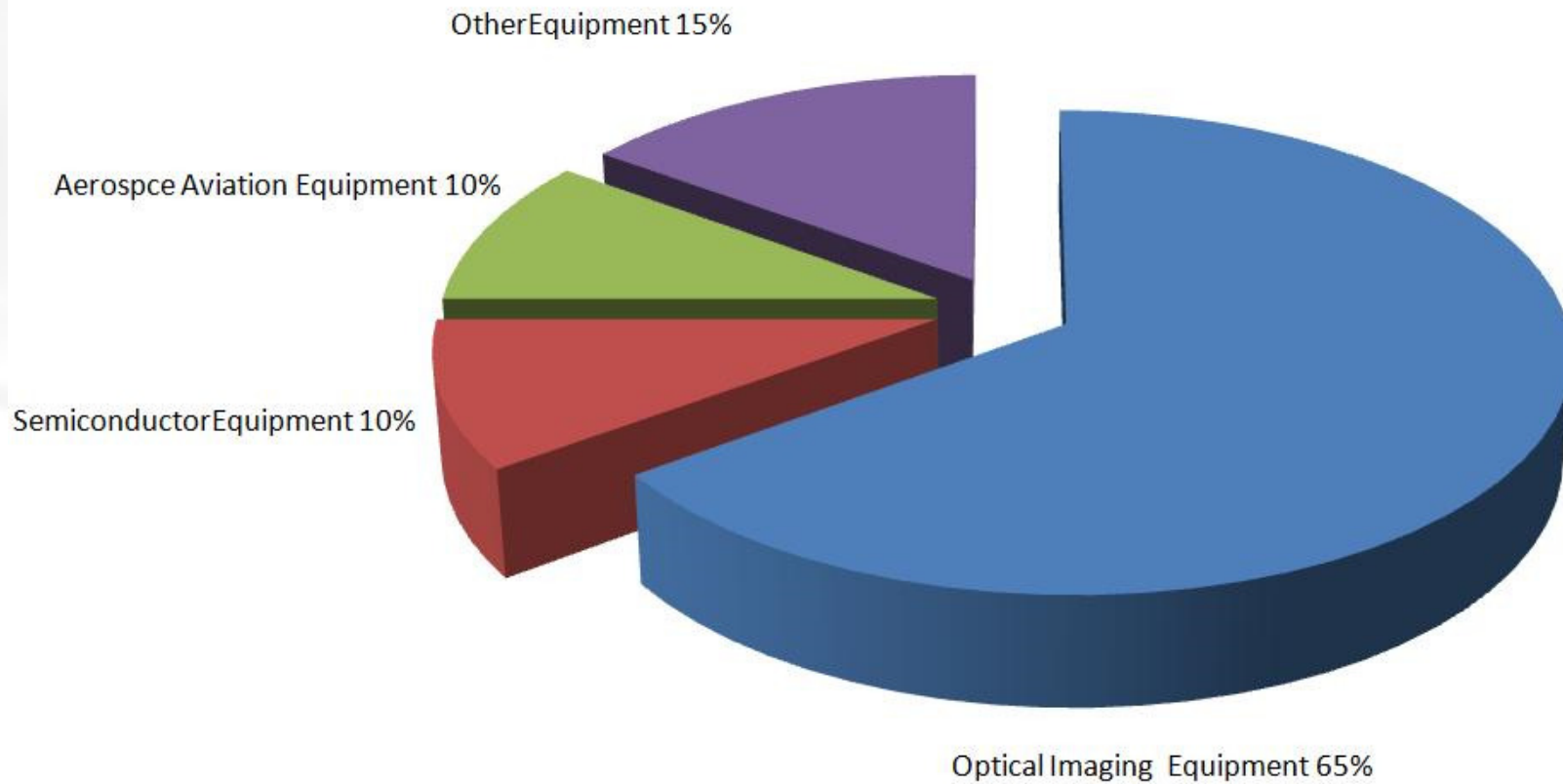


- **Our dedicated & conscientious employees.**
- **Talented & Highly Experienced Technical staff.**
- **Fully Integrated Medium scale machining facilities:**
  - CNC Milling (horizontal, vertical & 5 axis),**
  - CNC Turning (< OD450),**
  - Cylindrical & Flat-bed Grinding,**
  - Fully equipped Quality inspection facilities,**
  - EDM machining & Wire cutting + Super-drill,**
  - Conventional lathe & Milling,**
  - De-burring, Sandblasting and Blazing.**
- **Fully Integrated Quality Control Inspection Facilities**
- **Research & Development Team, Knowledge gathering and implementation culture.**

# Market Segments



ISO 9001 : 2000 Cert.No. : 42987





## Machinery Facilities

### CNC Milling M/C Section:

- YASDA Brand CNC High Speed 3-Axis M/C x 2 units
- BROTHER Brand CNC 3-Axis M/C x 1 unit
- QUASER Brand CNC 3-Axis M/C x 9 units
- FANUC Brand CNC Robot Drill 3+1 Axis M/C x 7 units
- MITSUBISHI Brand CNC High Speed 5-Axis M/C x 2 units
- MORISEIKI Brand CNC High Speed 3-Axis M/C x 1 unit
- EXTRON Brand CNC 3-Axis M/C x 1 unit

### CNC Turning M/C Section:

- MAZAK Brand CNC Lathe M/C x 12 units
- TAKAHASHI Brand CNC Lathe M/C x 2 units
- WASINO Brand CNC Turn-Mill M/C x 1 unit
- TAKISAWA Brand CNC Turn-Mill M/C x 1 unit
- MAZAK Brand CNC Turn-Mill M/C x 1 unit

### Precision Grinding M/C Section:

- OKAMOTO Brand Surface Grinding M/C x 2 units
- MITSUI Brand Surface Grinding M/C x 1 unit
- SHIGIYA Brand Cylindrical Grinding M/C x 1 unit

### Wire-Cut M/C Section:

- MITSUBISHI Brand Wire-Cut M/C x 3 units

### EDM M/C Section:

- MITSUBISHI Brand EDM M/C x 2 units
- ICHI SEIKI Brand EDM M/C x 1 unit

## Quality Control Facilities

- Brown and Sharpe Brand CMM x 2 units
- Profile Projector x 2 units
- Micro-Height Gauge x 1 unit
- Height Gauge x 2 units
- Toolmaker/Micro Scope x 3 units
- FlexiVision Microscope V-200 x 1 unit
- HR-150A Hardness Tester x 1 unit
- Surface Roughness Tester x 1 unit
- Electronics Micrometer / Vernier x 10 units
- Slip Gauge x 1 unit
- Depth Gauge x 1 unit
- Internal Three Points Micrometer x 2 units and so on

## Value-Add Facilities

- Systems integration line
- Customized Machine Automation

## Other Facilities

- Sand-blasting M/C x 3 units
- ICHI SEIKI Brand Conventional Milling M/C x 3 units
- NEUTRON Brand Manual Lathe M/C x 1 unit
- SODIK Brand Super Drill M/C x 1 unit
- BINDER Brand Heating Oven x 1 unit
- Precision Tool & Cutter Grinder x 3 units
- High Speed Bench Saw x 1 unit
- High Speed Vertical Saw x 1 unit
- Pneumatic Bender x 1 unit
- TOYO Brand Laser Marking M/C x 1 unit
- MARKMAN Brand CNC Engraving M/C x 1 unit
- ELBO Controlli Hathor Tool Pre-setter M/C x 1 unit
- FEDEK Brand Bar Feeder x 1 unit and so on...



# CNC Milling Section



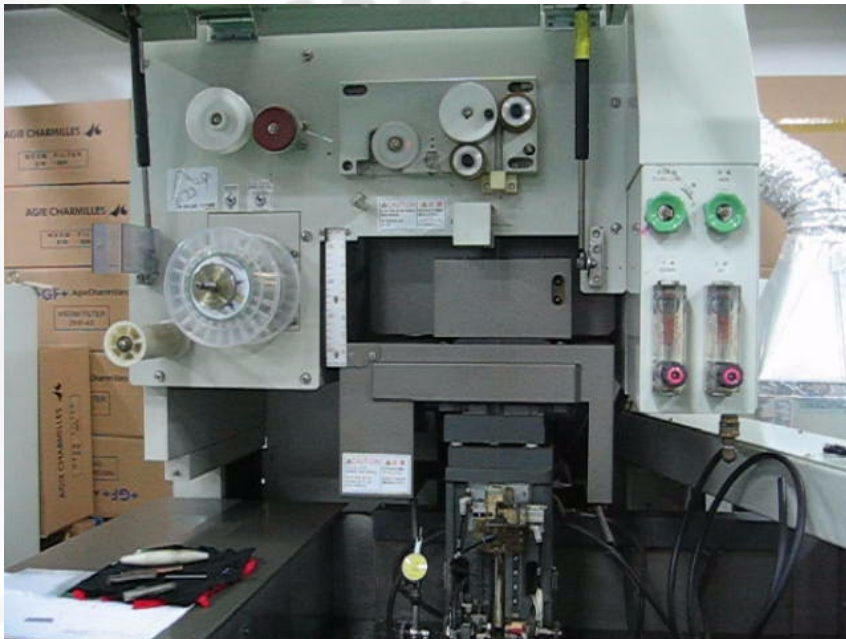
BRAND	MODEL	QTY
QUASER	MV 154P	4
YASDA	YMC 430 VII	1
YASDA	YBM 950V VIII	1
BROTHER	TC-S2C	1
QUASER	MV 154 P/L	2
FANUC	ALPHA-T21iFb	1
FANUC	ALPHA-T21iEe	6
QUASER	MV 204 CU	1
QUASER	MV 204 CPL	1
QUASER	MK 603 HPD	1
MORISHIKI	NVD 1500 DCG	1
MITSUBISHI	Micro V1	1
MITSUBISHI	Micro V1-5X	1
EXTRON	M6L	1

# CNC Turn-Mill Machine Centre



BRAND	MODEL	QTY
MAZAK	QUICK TURN STAR 200	1
MAZAK	QUICK TURN NEXUS 200-II	1
MAZAK	SUPER QUICK TURN 200	1
MAZAK	INTEGREX-100-IV	1
MAZAK	QUICK TURN NEXUS 100	2
MAZAK	QUICK TURN NEXUS 150	1
MAZAK	QUICK TURN NEXUS 100 II	6
TAKAHASHI	Micro Star L2-PB	2
WASINO	A-18-S	1
TAKISAWA	TCN-2000Y-T12,L3	1

# EDM Wire Cut Section



BRAND	MODEL	QTY
MITSUBISHI	FX10K	1
MITSUBISHI	FA10PM	1
MITSUBISHI	FA10SM	1



**Eratech**

# EDM Section



BRAND	MODEL	QTY
MITSUBISHI	EA8	2
ICHI SEIKI	CMA43C	1



**Eratech**

# Flat- bed & Grinding Section



BRAND	MODEL	QTY
MITSUI	MSG-200H1	1
OKAMOTO	500DXAL	1
OKAMOTO	ACC-63ST	1
SHIGIYA	GP-20-25H	1



# Quality Control Section



BRAND	MODEL	QTY
Brown & Sharpe	CMM STATUS 7107	1
Brown & Sharpe	CMM CLASSIC 575	1
TESA	Micro Hite 350	1
TESA	Hite 400	2
Flexi	Flexi Vision Microscope V-200	1
TESA	Profile Projector 355H	1
MITUTOYO	Profile Projector PJ300	1
TESA / MITUTOYO	Micro Scope / Tool Maker Scope	3
MITUTOYO	SUR-ROUGHNESS TESTER SJ-201P	1
HR	Hardness Tester HR 150A	1

# Eratech Machine Section



**Conventional Milling M/C**



**Sand Blasting**



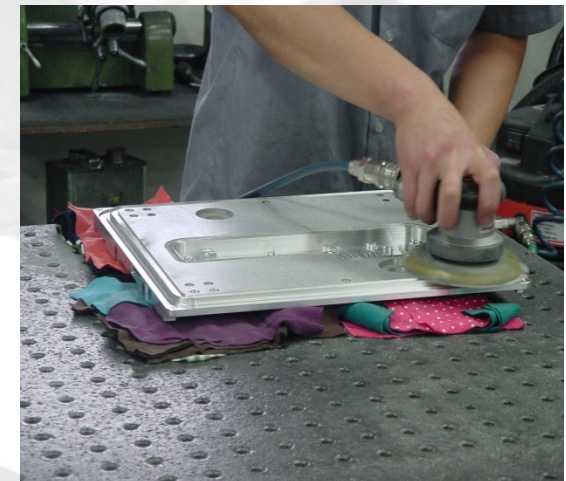
**Manual Tapping M/C**



**Tooling Re-sharper M/C**

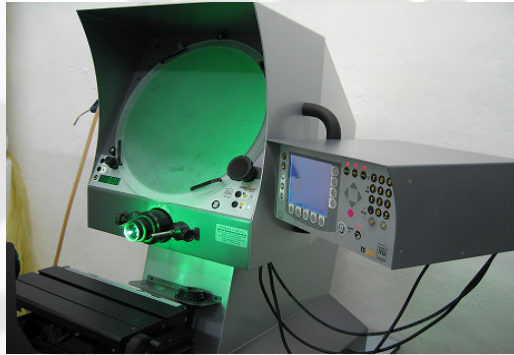


**Surface Sucking M/C**

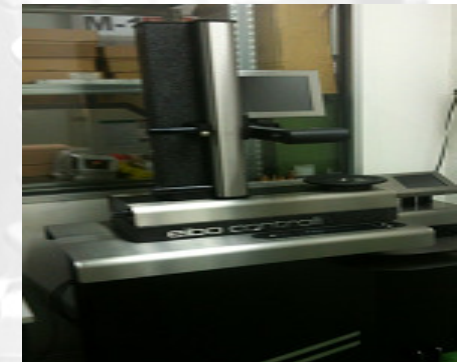


**Jitter Bugging**

# Quality Control Section

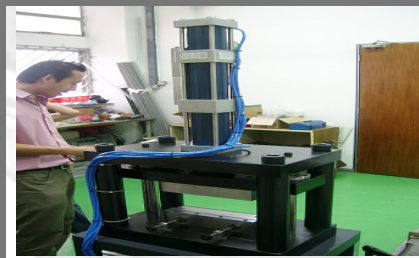


CMM





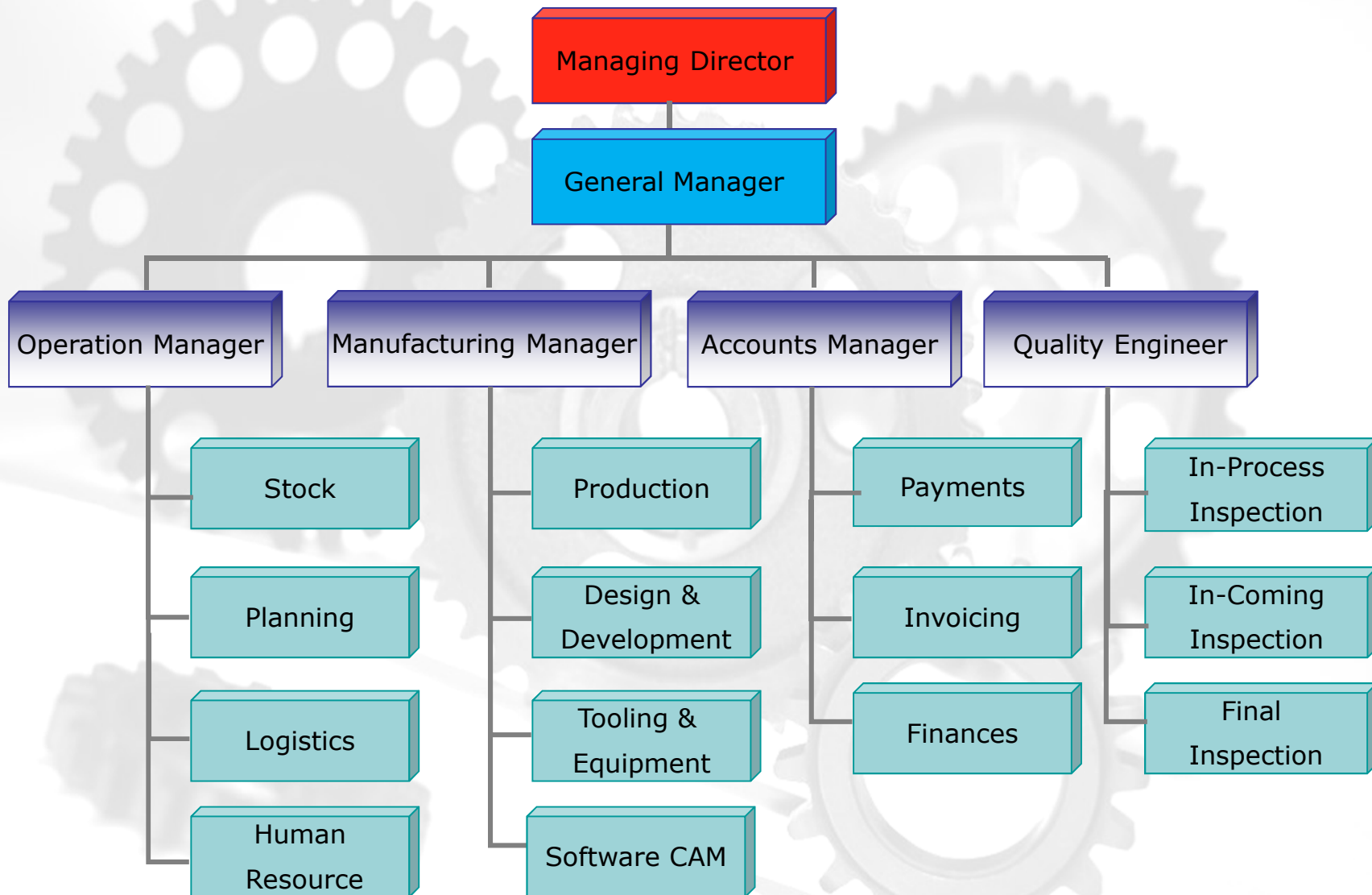
# Eratech Machinery Photos



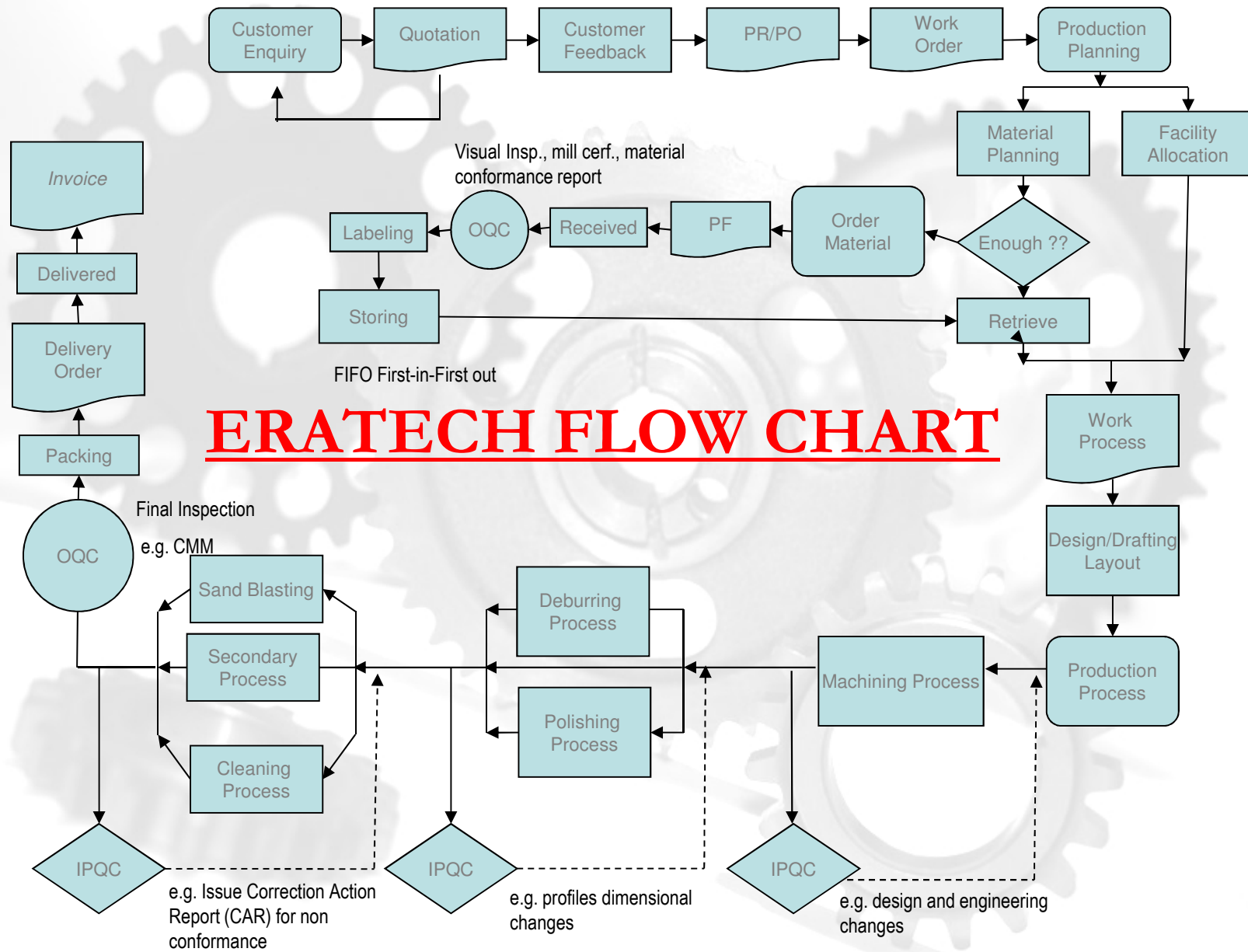
# Eratech Machinery Photos



# Organization Chart

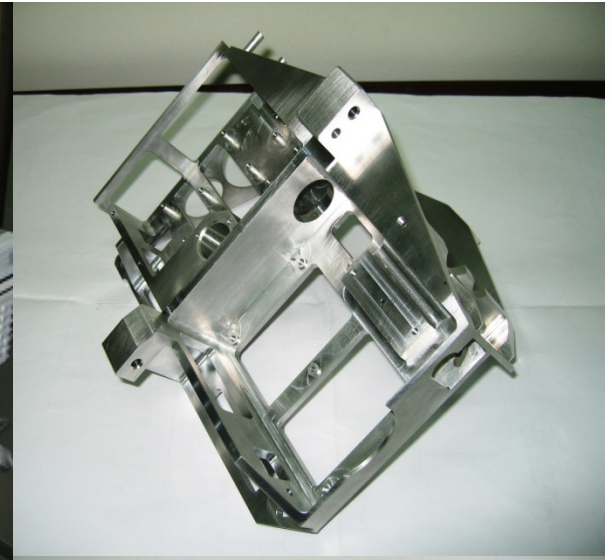
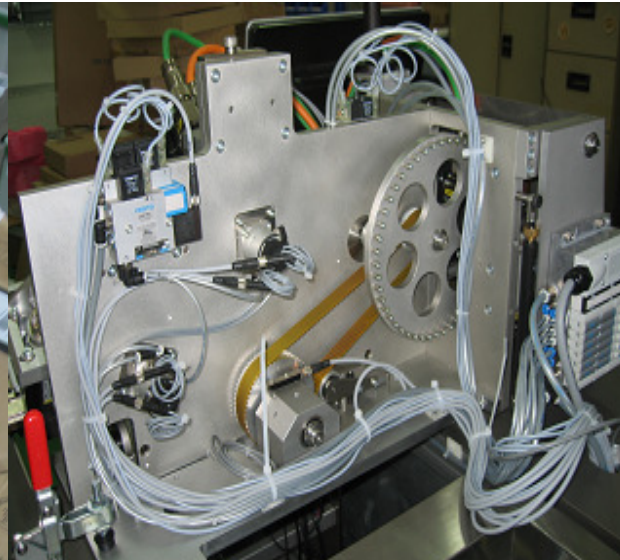
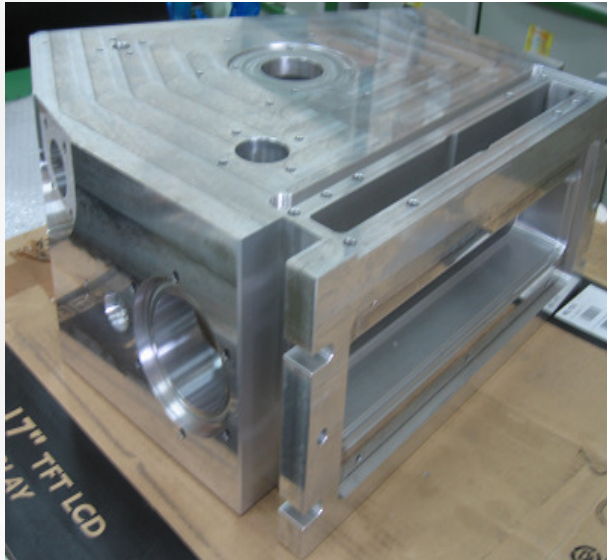


# Eratech Flow Chart

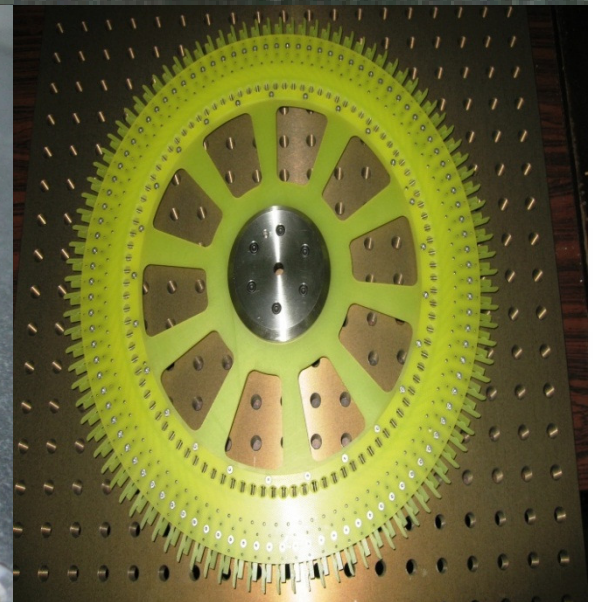
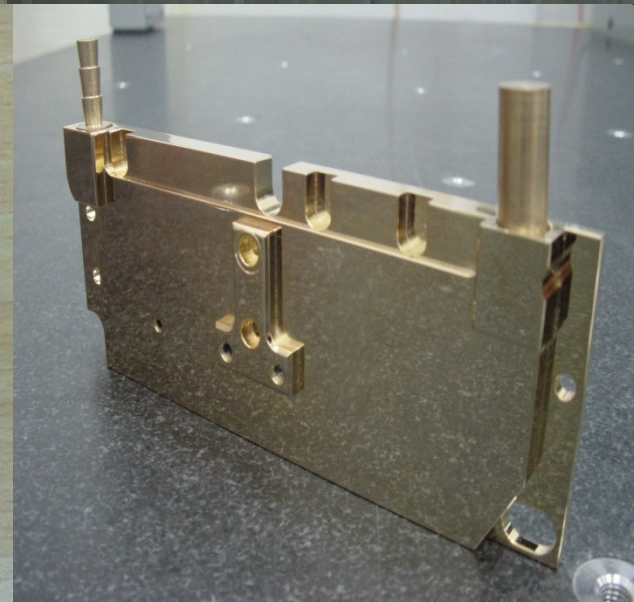


## ERATECH FLOW CHART

# Our Products



# Our Products



# Our Products



# Our Commitments



- **Competitively Priced Quality Service**
  - Increase and enhancement of employee productivity
  - Progressive upgrade of latest state-of-art machinery for fast turnaround time through high machinery capability and manufacturing productivity
  - Ensure efficient, accurate component level procurement
- **Quality Customer Service**
  - Constant and consistent communication
  - Prompt and accurate service support
  - Technically proficient sales staffs
- **Regional Manufacturing & Marketing Operations for expansion**



# Contacts Us



Thanks you for your attention.

For Further Enquires please contact the following

**Managing Director : Mr. Eddie Koh**

**Address:** Blk 5000 Ang Mo Kio Ave 5 Techplace II # 01 – 06/09  
Singapore 569870  
**Telephone:** (+65) 6482 4666, 6482 5228, 9677 3979 ( HP )  
**Facsimile:** (+65) 6482 3862  
**Email:** [hmkoh@eratechprecision.com.sg](mailto:hmkoh@eratechprecision.com.sg)

**General Manager : Mr. Adrian Goh**

**Address:** Blk 5000 Ang Mo Kio Ave 5 Techplace II # 01 – 06/09  
Singapore 569870, Republic of Singapore  
**Telephone:** (+65) 6482 4666, 6482 5228  
**Facsimile:** (+65) 6482 3862  
**Email:** [adrian@eratechprecision.com.sg](mailto:adrian@eratechprecision.com.sg)

**Sale Manager : Mr. K.H. Futterknecht**

**Address:** Blk 5000 Ang Mo Kio Ave 5 Techplace II # 01 – 06/09  
Singapore 569870  
**Telephone:** (+65) 6482 4666, 6482 5228  
**Facsimile:** (+65) 6482 3862  
**Email:** [heinz.fu@eratechprecision.com.sg](mailto:heinz.fu@eratechprecision.com.sg)



**THE END**

[Home](#)

*Thanks,  
Ko Ko*